

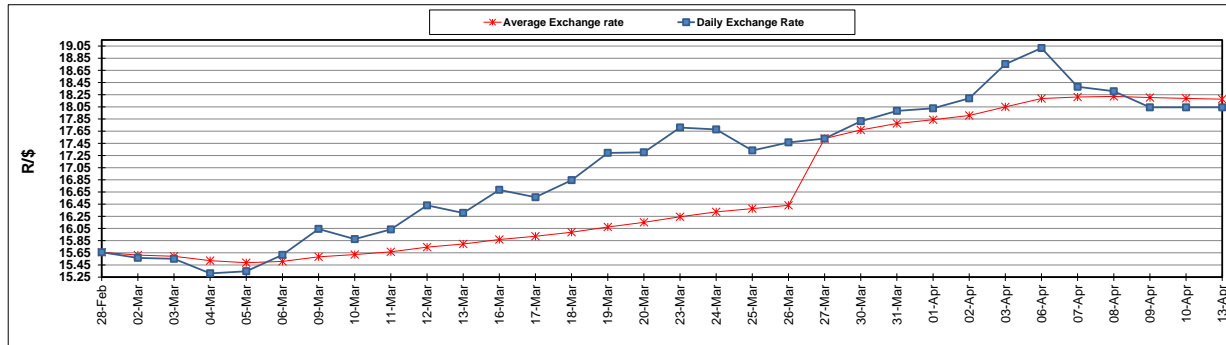
	PETROL 95 ULP	PETROL 93 ULP & LRP	DIESEL 0.05%	DIESEL 0.005%	ILL. PAR.
GAUTENG PUMP PRICE (SA c/l) AS FROM 01/04/2020	1,396.000	1,376.000	-	-	-
WHOLESALE PRICE (SA c/l) AS FROM 01/04/2020	-	-	1,269.560	1,273.960	672.828
SINGLE NATIONAL MAXIMUM RETAIL PRICE	-	-	-	-	840.000
BASIC FUEL PRICE - 13/04/2020 (SA c/l)	284.927	281.195	408.356	418.479	298.852
PRESS RELEASE CONTRIBUTION TO BFP 01/04/2020 - 13/04/2020 (SA c/l)	448.770	438.770	518.630	523.030	468.128
UNIT OVER/(UNDER) RECOVERY - 13/04/2020 (SA c/l)	163.843	157.575	110.274	104.551	169.276
AVERAGE BASIC FUEL PRICE 27/03/2020 - 13/04/2020	310.880	306.178	442.965	451.156	326.859
AVERAGE UNIT OVER/(UNDER) RECOVERY 27/03/2020 - 13/04/2020	192.690	184.393	116.915	113.374	190.769

ANALYSIS MOVEMENT OF AVERAGE OVER/(UNDER) RECOVERY

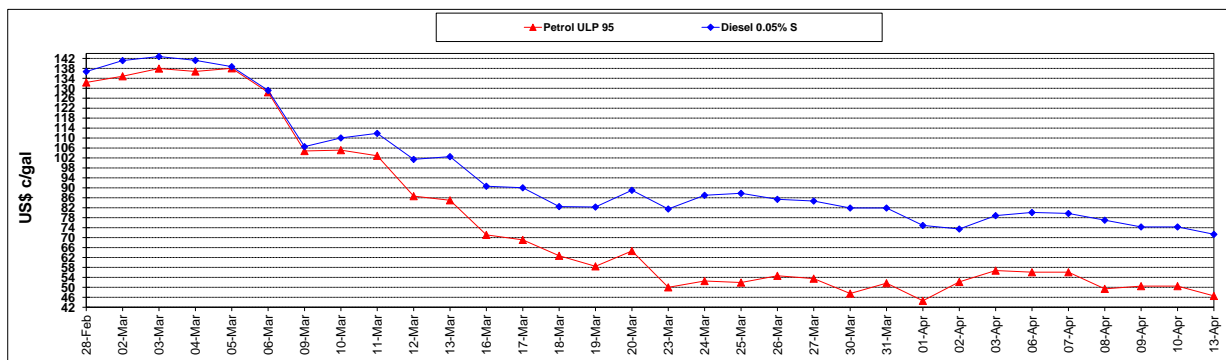
	PETROL 95	PETROL 93	DIESEL 0.05%	DIESEL 0.005%	ILL. PAR.
- MOVEMENT IN INTERNATIONAL PRODUCT PRICES	222.560	213.810	159.476	156.722	222.175
- MOVEMENT IN EXCHANGE RATE	(29.870)	(29.418)	(42.561)	(43.348)	(31.406)
AVERAGE UNIT OVER/(UNDER) RECOVERY 27/03/2020 - 13/04/2020	192.690	184.393	116.915	113.374	190.769

R/\$ EXCHANGE RATE - (R/\$18.0420 - 13/04/2020)

EXCHANGE RATE USED IN BASIC FUEL PRICE



INTERNATIONAL PRODUCT PRICES OF BASKET USED IN BASIC FUEL PRICE



BASIC FUEL PRICE IN SA CENTS PER LITRE

